



M2000 Series Smart Manometer



M2000 Features

- Mobile data logging - no computer required while taking measurements
- Computer configuration, calibration, and data logging application
- One (1) fixed sensor
- Backlight
- Battery life display (0 to 100%)
- USB communication
- Ranges available: -14.5 psi to 3000 psi
- Min/Max pressure capture
- RTD (Temperature) accessory sensor option
- Compound, Absolute, and Differential pressure sensors
- Protective red boot
- Optional pressure fittings, hand pump kit and carrying case

Smart Manometer

Meriam M2000 is a portable pressure instrument with flexible features to meet many of your everyday pressure measurement needs. This device features an easy and intuitive user interface with convenient pressure connections. Intrinsically Safe model is also available.

- 316SS media isolated pressure sensors to suit a wide range of applications
- Common features include damping to stabilize fluctuating pressure signals and data logging for easy measurement capture
- This device ships with calibration certificate traceable to NIST
- M2000 can use a second sensor with the MTS Series of Tethered Modules (Pressure & Temperature)

Applications

- Pressure Transmitter Calibration
- Leak testing for low pressure gas systems
- Pressure drop monitoring across filters
- Monitoring vacuum on condensers and pumps

Meriam Tethered Sensors (MTS)

Expand the capabilities of the M2000 by adding an MTS to measure a second pressure or a PT100 Class A RTD temperature.

Choose any available pressure or temperature sensor type and range and connect your accessory MTS using the included 1 meter cable.

All the functions of the M2000 are available to the MTS.

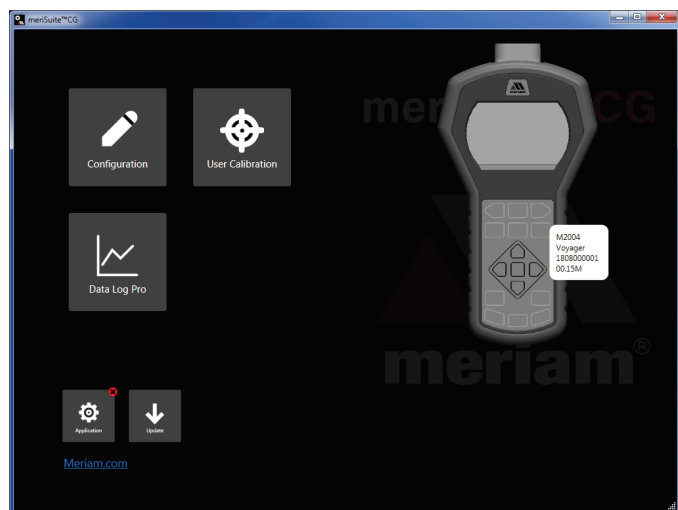
This is an interchangeable sensor giving extra flexibility to your measurement needs.



meriSuite CG

meriSuite CG application

Our meriSuite CG application is included with the M2000 so you can configure M2000 and MTS to streamline your daily measurement tasks.



Configure the Smart Manometer and sensors

Configure and download data logs, select measurement units and configure user defined units, turn on and off device functions, and calibrate your device using your local measurement standards.


Add Data Log Pro to the M2000 to expand data logging capabilities to 128 log files or 100,000 data points. Modify data log options and settings using Data Log Pro tab in meriSuite CG.

Specifications

Optional MTS

Temperature Probe Accuracy

- IEC 60751 PT100 class A
- Tolerance = $\pm (0.15 + 0.002 |t|)$ °C
- Probe measurement range: -50 °C to 250 °C

 **WARNING:** Cancer and Reproductive Harm - www.P65Warnings.ca.gov

M2000 Series Smart Manometer

Specifications

M2000 Smart Manometer

Pressure Accuracy

- 0.025 % full scale

Pressure ranges (select one)

Non-isolated

- Compatible with clean, dry, non-corrosive, gas media
- 0 to 15, 30, 100 psi Absolute
- 1 to 1, -5 to 5, -14.5 to 15, 30, 50, 100 psi Differential
- 1 to 1, -5 to 5, -14.5 to 15, 30, 50, 100 psi Compound

Media-isolated

- Media compatible with 316SS
- 0 to 15, 30, 100, 1000 psi Absolute
- 1 to 1, -5 to 5, -14.5 to 15, 30, 50, 100, 300, 500 psi Differential
- 5 to 5, -14.5 to 15, 30, 50, 100, 300, 500, 1000, 3000 psi Compound

Measurement Units

- Offering over 30 measurement units including psi, kPa, mmHg, inH₂O, mbar, and user defined units

Display Resolution

- 6 digits

Temperature Specifications

- Storage: -20 °C to 70 °C (-4 °F to 158 °F)
- Operating: -10 °C to 50 °C (14 °F to 122 °F)

Dimensions with boot

- Length 9.8 in (248.9 mm) from manifold to end of boot
- Width 5.2 in (132.1 mm) at widest point with boot
- Thickness 2.3 in (58.4 mm)

Connections

- 1/8" Female NPT 316SS
- USB
- Meriam Tethered Sensor (MTS) Port

Power

- 4 AA batteries