

BUSAN METRO TRIP



Busan Tourism Portal "VISIT BUSAN"
visitbusan.net/en



Busan Tourism Organization
visitbusan.en



Busan Tourism Organization
Instagram
[@visitbusan.en](https://www.instagram.com/visitbusan.en)



Busan Tourism Organization
Homepage
bto.or.kr/eng

Publishing Date : November 2020

Busan Tourism Information call | 1330
Inconvenient Traffic complaint | 120



Gwangalli Beach



Kaya Univ.

Yangsan

Nopo

Ilgwang

Anpyeong

Daejeo

Deokcheon

Minam

Dongnae

Beomeosa Temple

Geumjeongsanseong

Busan Bus Terminal

Innang Beach

Ilgwang Beach

Let's Run Park
Busan Gyeongnam

Gimhae Airport

Sasang Intercity Bus Terminal

Sasang

Sajik Baseball Stadium

Busan Citizens Park

Geoje

Yeonsan

Busan Nat'l Univ. of Edu

Jukseong Church

Busan Premium Outlet

Jangsan

Haedong Yonggungsa Temple

Seomyeon

Jeonpo Cafe Street

Suyeong

Busan Cinema Center

BEXCO

Songjeong Beach

Haeundae Beach

Dalmaji-gil Road

Nakdong Estuary
Eco Center

Eulsukdo Bird
Sanctuary

Gamcheon
Culture Village

Jagalchi
Market

BIFF Square

Shanghai Street
Ibagu Road

Busan Station

Busan International
Passenger Terminal

Busan Museum

UN Memorial Park

Busan Cultural Center

Igidae Urban
Natural Park

Nurimaru
APEC House

Haeundae Beach

Yongdusan Park

Gukje Market

Songdo Beach

Yeongdodaegyo Bridge

Taejongdae Resort Park

Millakdong Raw Fish Town

Gwangalli Beach

Gwangandaegyo Bridge

Nurimaru
APEC House

Haeundae Beach

Dalmaji-gil Road

Dadaepo Beach

Songdo Yonggung
Cloud Bridge

Oryukdo Islets

METRO LINE

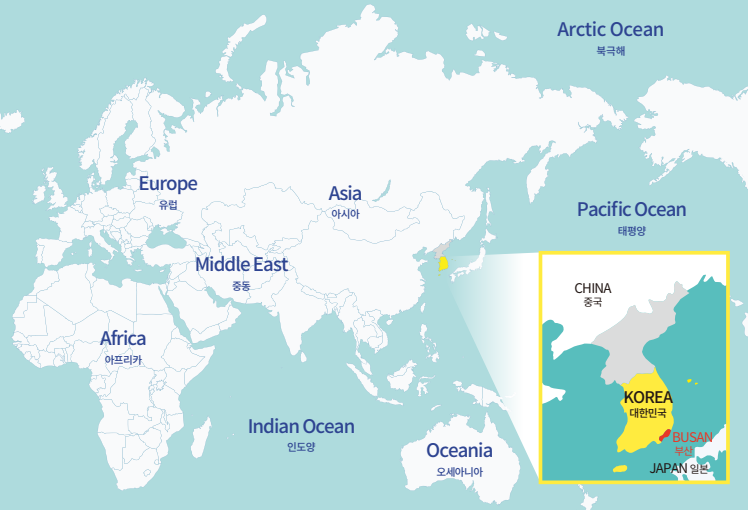
- Metro Line 1
- Metro Line 2
- Metro Line 3
- Metro Line 4
- Donghae Line
- Busan-Gimhae Light Rail Transit
- Transfer



Meet BUSAN 부산만나기



As the second-largest city and the largest coastal city of Korea, Busan attained its geographical and social importance in Korea during the Korean War as the city that received large influxes of refugees and war supplies. Today, Busan is a beloved destination for Koreans and international tourists alike.



Hi, Busan!

안녕, 부산!

Total area	770.04km ²
Time zone	GMT+9, Korean/Japanese Standard Time
Electricity	220V, 60Hz equivalent to France, Germany, Australia, Greece, and Turkey
National number	+82
Regional number	051 Omit the first "0" when you are calling from outside of Korea.

Currency

화폐단위

The Korean currency is called the won (KRW). The coins in circulation include KRW 10 (embossed with an image of the Dabotap Tower), KRW 50 (embossed with an image of an ear of rice), KRW 100 (embossed with an image of Admiral Lee Sun-shin), and KRW 500 (embossed with an image of a crane). The Korean notes include the KRW 1,000 (blue), KRW 5,000 (brown), KRW 10,000 (green), and KRW 50,000 (dark yellow).

Exchange Rate

환율

As of August.2 2020, the exchange rates were
USD 1 = 1,184won / CNY 1 = 170won / JPY 100 = 1,123won

Monthly 'Busan' climate

월별 '부산' 기후

- **March through May** Temperature in Busan begins to rise in April, and the average temperature during these months reaches 17°C. Along with the rise in temperature, the amount of precipitation also increases beginning in April. If you are planning to visit Busan during these months, make sure you bring an umbrella. These months tend to be less busy, so it will be easier for you to find accommodation.
- **June through September** The average temperature in Busan August rises as high as 25.7°C. The annual monsoon hits Busan in June, and a number of typhoons occur in the following two months. Rainfall will be more frequent in September than in August in Busan.
- **October and November** Busan's mild maritime climate is at its most stable and finest during these 2 months, with an average temperature of 19°C. These are perhaps the best months to visit Busan.
- **December through February** The weather can get quite chilly in Busan during the winter months, but it is still quite rare to see snowfall in this city. The average temperature stays around 3°C during January. While the winter months tend to have the least amounts of precipitation, the recent climate change makes it difficult to accurately forecast winter precipitation in Busan.

Free Wi-Fi service instructions

무료 와이파이 이용안내

Busan provides free public WiFi access for smartphones, tablet PCs, laptop computers, and other similar devices at all popular public spots throughout the city.

*For information on Wi-Fi hotspots, please check
: <http://tour.busan.go.kr/kor/wifi.jsp>

Select	Device type	Guide
How to access free public WiFi in Busan	iPhone (iOS)	Settings ▶ WiFi ▶ Network "Dynamic Busan" ▶ "Home" button ▶ Use the Internet
	Android	Drag the top bar downward and turn on the "WiFi" signal ▶ Network "Dynamic Busan" ▶ "Home" button ▶ Use the Internet
How to switch to the open public WiFi network	All devices	WiFi ▶ Public WiFi (free) ▶ Click or touch "Free Public WiFi" on the desktop ▶ Use the Internet

Emergency contact number

여행 시 비상 연락처

- **Consulate-general of China** 47 Haebyeon-ro, Haeundae-gu ☎(051) 743-7990
busan.china-consulate.org/kor
- **Consulate-general of Japan** 18 Gogwan-ro, Dong-gu ☎(051) 465-5101-6
www.busan.kr.emb-japan.go.jp
- **American Presence Post** Suite 612, Lotte Gold Rose, 993 Jungang-daero, Jin-gu ☎(051) 863-0731
kr.usembassy.gov

Sightseeing taxi Service

관광택시

Busan Tour

Deungdae Call Taxi Service offers unique opportunities to take a tour around major tourist destinations and attractions in Busan in the comfort of a taxi.

Booking is essential

Make a reservation and talk to a guide at least two hours before your planned trip.

Fares

KRW 20,000 an hour / KRW 80,000 per half-day (five-hour) trip / KRW 150,000 per day (10-hour) trip
※ Road tolls and parking charges not included.

Reservation

051) 600-1004 / www.bstt.co.kr

1

LINE

Dadaepo Beach
Dadaepo Harbor

...

Jagalchi
Nampo
Jungang
Busan Station
Choryang
Busanjin

...

Beomaegeol
Seomyeon
Bujeon
Yangjeong
City Hall
Yeonsan
Busan Nat'l Univ. of Edu
Dongnae
Myeongnyun
Oncheonjang
Pusan Nat'l Univ
...
Beomeosa
Nopo

V I S I T V I S I T

BUSAN METRO LINE no.1

Metro Line 1, stretching from North
to South, and even West Busan.
Let's take off for a sightseeing tour of
Busan on Metro Line 1!

B U S A N B U S A N

B U S A N B U S A N

- Dadaepo / Eulsukdo
- Amisan Observatory
- Gamcheon Culture Village
- Songdo / Taejongdae
- Jagalchi / Gukje Market
- Nampo-dong
- Shanghai Street / Ibagu-gil
- Busan Station / Seomyeon
- Jeonpo-dong / Bujeon-dong
- Beomeosa Temple / Oncheonjang

Dadaepo Sunset Fountain of Dreams

14, Morundae 1-gil, Saha-gu

Make unforgettable memories by requesting a song or sharing your story to celebrate your special day or pop the big question in perfect harmony with the fountain's beautiful lights, magnificent music, and splashing water.



Section	Season	Schedule	Remarks
Musical Fountain	summer (July-August)	20:00 (Two shows ▶ One show per day on weekends and public holidays)	20min per session
	fall (September-October)	19:30 (Two shows ▶ One show per day on weekends and public holidays)	

※ For the prevention of COVID-19, people will not be allowed to play in the fountain.

TIP

Why don't you send stories to diverse citizen participation programs with the Dadaepo Sunset Fountain of Dreams? Please visit our website to use boards for each program such as Song Requests, Messages, Proposals, and Stories to Celebrate. The unforgettable events created by citizen participation are ways of Fountain of Dreams much more. Come and become a member to be able to participate.

Information

- Metro Line 1 at Dadaepo Beach (Morundae) Station (Exit 4) ▶ A 3-minute walk
- Division of General Affairs, Saha-gu : (051) 220-5891~5
- saha.go.kr

Eulsukdo Bird Sanctuary & Nakdong Estuary Eco Center

1240, Nakdongnam-ro, Saha-gu

What if a place, once only studied in class, was spread out before your eyes? Eulsukdo is a spot where you can see the Nakdong Delta at the mouth of the Nakdonggang River. The nearby Nakdong Estuary Eco Center is the perfect place to enjoy the flapping of migratory birds through large glass windows, along with the glow of the setting sun. Spacious internal facilities in conjunction with ample parking have drawn positive reviews from tourists. Please note that the center is closed on Mondays.



TIP

Nakdong Estuary Eco Center

Automatic guide devices in multiple languages (Korean, English, Chinese, and Japanese) as well as outdoor binoculars are provided for bird watching. Go to the Information Desk on the first floor for rental.

Section	Fare (2 hours)
Language service (Korean, English, Chinese, and Japanese)	Adults : 2,000won Youth or under : 1,000won
Outdoor binoculars (high magnifications)	5,000won
Outdoor binoculars (low magnifications)	2,000won

- ▶ Per extra hour
- ▶ Outdoor binoculars(high magnifications) :+2,500won
- ▶ Outdoor binoculars(low magnifications) :+2,000won

Information

- Metro Line 1 at Hadan Station (Exit 3) ▶ Transfer to Bus 58, 221, 58-1, 58-2, or 520 ▶ Get off at the Eulsukdo Rest Place Bus Stop.
- Nakdong Estuary Eco Center : (051) 209-2000
- busan.go.kr/wetland/index

Amisan Observatory

77 Dadaenakjo 2-gil, Saha-gu

Amisan Observatory is perhaps the best location for getting unhindered and panoramic views of the Nakdonggang River's estuary. The observatory also includes a gallery that displays images and descriptions of the unique topography and geology surrounding Nakdonggang River. The blue river under the midday sun is a refreshing sight, but the river's beauty reaches its peak under the burning sky come sunset. The view of the sun setting over the river is heartwarming indeed.



Section	Exhibition Guide	Duration
Exhibition Helper	Opening Hours: 9:00 a.m. - 6:00 p.m. (last admission at 5:00 p.m.) Closed: On January 1 and Mondays (or day after public holidays) Admission Fees: Free	20min (self-guided tour)
Docent Tour	Tour Times: On Saturdays and Sundays upon request Number of Participants: Maximum 20 people Docent: 1 docent specializing in nature and environment	30min

TIP

On the third floor of Amisan Observatory, there is a cafeteria where you can enjoy a cup of tea or other drinks you like. Please note it is closed on Sundays and when the observatory is closed.



Information

- 1 Metro Line 1
- Metro Line 1 at Goejeong Station (Exit 6) ▶ Transfer to the Bus 2, 11, 96 or 1000
- ▶ Get off at Daewoo Apartment ▶ A 10-minute walk toward Morundae Catholic Church
- ☎ Amisan Observatory : 051) 265-6863 🏠 saha.go.kr

Gamcheon Culture Village

203, Gamnae 2-ro, Saha-gu

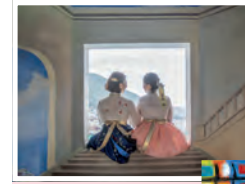
Gamcheon Culture Village is often known as the "Machu Picchu of Korea." The houses on the terraced hillside, labyrinth-like alleyways and stamp tour will make you want to visit the village again and again.



TIP

Souvenirs and Cafe

Various souvenirs of Busan and Gamcheon are available including handmade bracelets with custom designs, a cup of coffee at a scenic hilltop cafe, Hanji craft hand mirror, and mini mackerel-shaped cushion.



Information

- 1 Metro Line 1
- Metro Line 1 at Toseong Station (Exit 6) ▶ Transfer to Saha-gu Town Bus 1-1, Seo-gu Town Bus 2, or 2-2 ▶ Stopover at Gamsung elementary school bus station
- ☎ Gamcheon Cultural Village Information Center : 051) 204-1444 🏠 gamcheon.or.kr

Songdo Beach

100, (Amnam-dong), Songdo Beach-ro, Seo-gu

Songdo Beach is the first designated swimming beach in Korea. A special attraction of Songdo finally came up. It is Songdo Marine Cable Car that is restarting its operation at June 21st 2017, in 29 years. It's the first marine cable car across the sea and the sky around the beach. Also, you can enjoy many things to see over the sea such as SkyWalk, Songdo Coast Bolle-gil Walkway, Taejongdae, Huinyeoul Culture Village, Namhang Bridge as well as Songdo Beach



TIP

Busan Air Cruise

Busan Air Cruise offers a total of 39 cable cars, including 13 crystal cabins, that run 1.62 km between Songnim Park in the eastern part and Amnam Park in the western part of Songdo Beach. It is also equipped with various themed facilities. If you want to experience an exciting flight above the sea, you should check it out.

Information

- 1 Metro Line 1
- Metro Line 1 at Nampo Station (Exit 1) ▶ Bus 7, 9-1, 26, 30, 71 ▶ Songdo Beach Entrance
- Songdo Marine Cable Car Busan Air Cruise : 051) 247-9900
- www.busanaircruise.co.kr

Songdo Gureum(Cloud) Walk

129-4, Amnam-dong, Seo-gu

The Maritime Walking Course is the longest and the first curve-shaped skywalk in Korea.

Guests can walk along the skywalk to reach an observatory that hovers above the middle of the sea.



Songdo Yonggung Suspension Bridge

San 193, Amnam-dong, Seo-gu, Busan

The Songdo Yonggung Suspension Bridge, with a length of 127m and a width of 2m, connects Amnam Park with the upper part of Dongseom Island, a small uninhabited island across the sea. It will give you the thrill of walking above water as you take in the breathtaking scenery of unique rock formations.



Information

- 1 Metro Line 1
- Metro Line 1 at Jagalchi Station (Exit 1) ▶ walk to Chungmu-dong intersection, Transfer to the Bus 7 ▶ Get off at Amnam Park
- 051)240-4088

Taejongdae Resort Park

24, Jeonmang-ro, Yeongdo-gu

Located at the southernmost end of the Yeongdo Coast, Taejongdae was named after King Taejong Muyeol of the Silla Period who often visited the area, and was very impressed with its magnificent coastal view. Although Busan is wellknown for beaches, this is the only beach that offers a superb open view toward the sea. On clear days, you may have a chance to see Tsushima Island of Japan.



TIP

Jogaegui

Jogaegui (a shellfish baked in its own shell) is a must-try : it's the number one dish reminiscent of Taejongdae. Nobody refuses to fall in love with the flavor of grilled seashells mixed with cheese. Let's enjoy a specialty of Taejongdae at Jagal Madang, famous for serving plenty of Jogaegui.



Danubi Train

Let's look around the entire resort park in comfort by taking a ride on the Danubi Train. Take in views of Jagal Madang, Gumyeongsa and Taejongsa Temples, as well as the area's observatory and lighthouse.

Fares (30 persons or more)

Adults 3,000KRW (2,400KRW)
Youth 2,000KRW (1,600KRW)
Children 1,500KRW (1,200KRW)

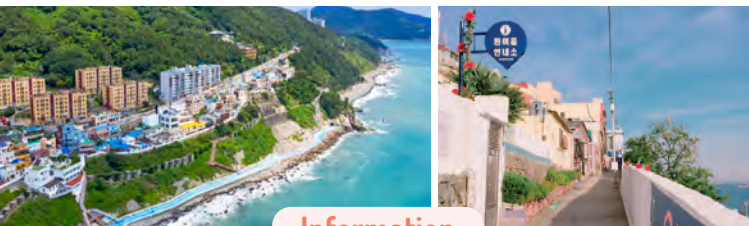
Information

- 1 Metro Line 1
- Metro Line 1 at Nampo Station (Exit 6) ▶ Transfer to Bus 8, 30, 66, 88 or 186 ▶ Get off at Taejongdae and walk to Taejongdae Resort Park for 3 min (plus, 30 minutes required to the observatory)
- Taejongdae Recreation Area : 051) 405-8745
- Home icon taejongdae.bisco.or.kr

Huinnyeoul Culture Village

1044-6, YeongSeon-dong 4ga, Yeongdo-gu

The neighborhood was born when Korean War refugees flocked to this area and provides an unhindered view of both the Busanhang and Namhang Ports. A major backdrop of the acclaimed Korean movie, The Attorney, the neighborhood was also featured in yet another Korean hit, Nameless Gangster : Rules of Time. The small houses that stand shoulder to shoulder form the signature look of Busan, which is often remembered as a city of the sea and hilly neighborhoods. The village continues to attract an increasing number of visitors with its new cafes, workshops, and guesthouses.



Information

- 1 Metro Line 1
 - Metro Line 1 at Nampo Station (Exit 6) ▶ Transfer to Bus 6 or 508 (Night Bus) at Yeongdodaegyo Bridge ▶ Get off at Busan Healthcare High School ▶ Walk 740m towards Huinnyeoul Culture Village
 - Yeongdo Cultural Center : 051)419-4067 🏠 www.ydculture.com

Yeongdodaegyo Bridge

Taejong-ro (Daegyo-dong 1ga), Yeongdo-gu

This is the first suspension bridge in Busan, whose function as a bascule bridge has finally resumed after 47 years. In the past, people gathered here to engrave their names on the bridge rails and receive news of their families during the Korean War. The Yeongdodaegyo Bridge often appears in songs about missing and loving those closest to us. Why not listen to some moving music here?

TIP

This bridge is raised once every day at noon (14:00 to 14:15). Many tourists take pictures with the raised bridge in the background. There it may be better to go to the bridge earlier if you want to find better photo opportunities and, for that matter, to the famous Eomuk bakery as well, another symbol of Busan



Information

- 1 Metro Line 1
 - Metro Line 1 at Nampo Station (Exit 8) ▶ Walk straight 200m

Bosu-dong Bookstore Alley

8, Chaekbanggolmok-gil, Jung-gu

'Books should last forever' and the Bosu-dong Bookstore Alley boasts a 50-year history and is home to more than 50 bookstores lined with tens of thousands of books. Anyone can buy books at an affordable price or choose to sell their own books if they wish. Why don't you take a break while looking around the small Mural Street located above the alley? The murals show the unique characters of bookstore alley as if from the pages of a fairy tale.



TIP

Dessert in the alley

It is natural to be hungry after browsing through a lot of books. Discover the famous restaurants hidden in the alley. There is a snack bar well known for its croquettes. You are sure to enjoy them with the scent of books in the background, and why not try some of the other delicious treats that can be found in the area such as doughnuts, dumplings, and patbingsu (red bean and ice dessert).



Information

- 1 Metro Line 1
 - Metro Line 1 at Jagalchi Station (Exit 3, 5 and 7) ▶ Walk straight toward Nampodong and Gukje Market (about 12 minutes required on foot to Bosu-dong Bookstore Alley)
 - bosubook.com

Jagalchi Market

52, Jagalchihaean-ro, Jung-gu



Jagalchi Market is famous for the slogan, "Come, See, and Buy." It is a place where you can feel the unique friendliness of Busan. A selected fish can be sliced on the spot for you to eat raw. Watching a flopping fish cleaned into sliced raw fish is in itself an amazing scene. Jagalchi Market is a must-see place for tourists.

TIP

There is a word-of-mouth sushi restaurant renowned through TV programs such as SBS Life Master, KBS' Six Hour program, Morning Wide, and Moohan 119. It is so popular that making a reservation is necessary. Located inside Jagalchi Market Hoe (Sashimi) Center, it's worth a visit.

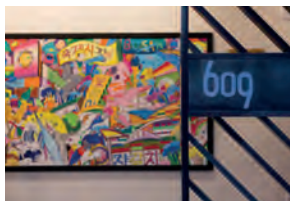
Information

- 1 Metro Line 1
- Metro Line 1 at Jagalchi Station (Exit 10) ▶ Walk 300m toward Jagalchi-gil
- ☎ Jagalchi Market : 051) 713-8000 🏠 jagalchimarket.bisco.or.kr

609 Cheongnyeon Mall

28, Junggu-ro, Jung-gu

There is one place you must visit in Gukje Market: a global cultural space called 609 Cheongnyeon Mall run by young up-and-coming merchants. As the name of the place suggests, it is located on the second floor of Building B in Zone 6. 609 Cheongnyeon Mall, with a hint of the old days of Gukje Market, is filled with diverse shops run by young merchants full of energy and artistic sensibility. It is surely an unusual place anyone, regardless of age, can enjoy.



- ※ Closed on the first, third and fifth Mondays
- ※ Opening hours : 10:00 am. ~ 8:00 pm.

Information

- 1 Metro Line 1
- Metro Line 1 at Jagalchi Station (Exit 7) ▶ Walk 400m toward Gukje Market ▶ Gukje Market 609 B
- ☎ Gukje Market Cooperative : 051) 245-7389 🏠 gukjemarket6.modoo.at

Gukje Market

Sinchang-dong 4-ga, Jung-gu

It is an enormous market located in Nampo-dong, which can be roughly divided into several subsections, such as Food Street, Youth Street, Everything Street, Airang Street, and Vintage Street. It is also known as "Dottegi Market." "Dottegi Market" refers to a disorderly, bustling, and unusual flea market where people used to sell off second-hand goods and junk at wholesale, retail, or under the table prices. The name originated from the fact that when Japanese people rushed back home following the independence of Korea, their leftover belongings went up for bidding. It has been said that there were lucky people who received a financial windfall at that time. One more thing to keep in mind is that this place is known as the heaven of snacks because each cranny is full of street snacks, including spicy glass noodles, sweet red bean porridge, and spicy rice cakes.



Information

- 1 Metro Line 1
- Metro Line 1 at Jagalchi Station (Exit 7) ▶ Walk 400m toward Gukje Market
- ☎ Gukje Market Cooperative : 051) 245-7389 🏠 gukjemarket.co.kr

BIFF Square

Throughout BIFF Gwangjang-ro, Jung-gu

It is the best-known place where you can feel the atmosphere of Busan, the city of film. Do not miss an exciting chance to take a look around at the handprints of filmmakers and enjoy the delicious local food.



National Museum of Korean Contemporary History, <http://archive.much.go.kr>

Information

- 1 Metro Line 1
- Metro Line 1 at Jagalchi Station (Exit 7) ▶ Walk 300m toward Lotte Cinema Daeyoung
- 🏠 www.bsjunggu.go.kr

Yongdusan Park

37-55, Yongdusan-gil, Jung-gu

The 120m high Busan Tower commands a particularly impressive view of Busan. It is also loved as a break area downtown where various programs and events are held each season. Please note that it can be easily reached by using the escalator leading to the park which was installed on Gwangbok-ro Street.

※ Bell of Citizens-tolling ceremony is held at Yongdusan Park for every New Year, March 1st Movement and National Liberation Day



TIP

Busan Tower Hanbok Rental Experience

Dress up in hanbok and take great pictures at the Yongdusan Park with your friends and loved ones. Note that visitors wearing hanbok can get admission discounts to the Busan Tower and the Busan Museum of Movies.

- Opening hours 10:00~18:00 (Holidays : No service on Mondays)
- Charge 10,000won / 1.5hours ~ 30,000won / All day
- Tel 010-6458-8507

Information

- 1 Metro Line 1
- Metro Line 1 at Nampo Station (Exit 1) ▶ 200m to Gwangbok-dong Fashion Street ▶ Use the escalator bound for Yongdusan Park
- Yongdusan Park Management Office : (051) 860-7820
- yongdusanpark.bisco.or.kr

Shanghai Street

Jungang-daero 179beon-gil, Dong-gu

This street was formed to commemorate the exchange between Busan and Shanghai, China. The red Shanghai Gate erected at the entrance was produced in China. There are various stores displaying Chinese culture such as Chinese restaurants and Chinese traditional tea houses.

TIP

Do you remember the scenes where the actor Choi Min-sik eagerly ate dumplings in the movie 'Oldboy,' and the actor Kim Myeong-min and actress Ha Ji-won had a meal in the movie 'Closer to Heaven' The Chinese restaurant in those movies is right on Shanghai Street.



Information

- 1 Metro Line 1
- Metro Line 1at Busan Station (Exit 1) ▶ Walk 5 minutes to the Shanghai Gate of Shanghai Street
- 051) 440-4061~6

Sanbokdoro·Choryang Ibagu-gil

14-13, Manghyang-ro 486beon-gil, Dong-gu

This sanbok (mountain slope) road opened in 1964. Designed in the course of urban planning, it has emerged as a new attraction for a panoramic night view of Busan. Among all the sanbok roads in Busan, it has the best perspective of the heart of Busan.

TIP

168 Stairs and Monorail

168 Stairs refers to a steep staircase as tall as a 6-story building, which is one of the best-known features along the mountainside road. With a total of 168 steps, in May 2016, a 60-meter-long monorail was built right next to the 168 Stairs.



Information

- 1 Metro Line 1
- Metro Line 1 at Busan Station (Exit 7) ▶ Walk 15 minutes (about 860m)
- 2bagu.co.kr/index

Busan station

206, Jungang-daero, Dong-gu

The center of Busan is Busan Station. This is the first place where tourists to Busan get off. Using Exit 6, you can go directly to the city tour Bus Stop for themed tours around Busan.



Use the Busan City Tour Bus

Loop Tour and Themed Tour Departure Point

- In front of Busan Station Square (between Exit 8 of Busan Metro)

How to buy a ticket

- Loop Tour : A Day pass for the Loop tour can be purchased from the driver at the time of boarding at each stop (first-come-first-served)
- Themed Tour : Reservations be required in advance. A themed tour ticket can be used only once, in a single service.

How to make a reservation of themed tour

- Online Reservation : www.citytourbusan.com
- Telephone Reservation : 051)464-9898
- Reserved tickets can be received from the driver at the time of boarding.



Transit Point and Extra Fares(in Korean Won)

- Haeundae course gives the holder all-day access to the 3 LINES(Only buy one red, blue, green ticket) of Loop tour.
- It costs surcharge to transfer Taejongdae course from the Haeundae course. (Adults : 5,000won / Children : 3,000won)

Fares(in Korean Won) / Holidays

- Adult 15,000won / Children (5 ~ HIGH SCHOOL STUDENT) 8,000won
- Group Tour (15 people or more) 2,000won Discount per Person
- ※ Holidays : No services on Mondays(Unless it is a public holiday)

Information

- Metro Line 1 at Busan Station or Metro Line 1 at Jungang Station (Exit 11) when visiting 40- step Cultural Tourism Theme Street ▶ Move about 270m ARS 1544-7788

Seomyeon Underground Shopping Center

717, Jungang-daero, Busanjin-gu

Seomyeon Underground Shopping Center, directly connected to Seomyeon Metro Station, consists of about 330 stores with approximately two hundred thousand visitors passing by on weekdays. It is crowded all year round because of the benefit of having a Metro transfer station, department store and Busan Medical Street all in one place.

TIP

Opening hours

The Seomyeon Underground Shopping Center is closed the first Tuesday of each month. Because all the stores are closed on that day, it would be better to check the holiday dates every month before visiting, operating time 10:00 am-10:00 pm



Information

- Metro Line 1
- Metro Lines 1 and 2 at the underground center of Seomyeon Station
- www.busanjin.go.kr

Seomyeon Eatery Alley

Sincheon-daero 62beon-gil, Busanjin-gu

Let's visit a food lover's paradise, the Seomyeon Eatery Alley. A variety of dishes such as Topokki (stir-fried rice cake), Eomuk (fish cake), and Sundae(Korean sausage) served at cart bars. Dwaeji-gukbap (pork rice soup) restaurants boasting the taste of their thick soups stand close together, and the vast array of chopped noodles served at an affordable price are reminiscent of past times. The tasty smell of chickens fried in a traditional way fills chickenalley, stimulating the senses.

TIP

There are different eatery alleys boasting distinctive dishes at every corner of Seomyeon. While searching for your desired food such as a whole fried chicken, chopped noodles, or gukbap among many others, you can have a look around the streets of Seomyeon.



Information

- Metro Line 1
- Metro Line 1 at Seomyeon Station (Exit 1) ▶ Walk 100m from where you come out.

Jeonpo Cafe Street

Throughout Jeonpo-daero and Seojeon-ro, Jeonpo-dong



It is a place full of things to see, eat, and buy. Not far from Seomyeon 1beonga, one of the busiest streets in Busan, you will be able to find a quiet cafe street filled with about 30 unique coffee shops beautifully decorated. It is worth noting that originally, in Bujeon-dong and Jeonpo-dong, there was also a street full of hardware shops selling industrial supplies and tools.

TIP

Recently, unusual eateries have begun to spring up on this well known cafe street. Moreover, because of the proximity of nearby theaters, this street has become popular among couples, where meals, desserts, and culture can be enjoyed at the same time.

Information

- 1 Metro Line 1
- Metro Line 1 at Seomyeon Station (Exit 6) ▶ Move about 230m toward NC Department store ▶ 5-minute walk to M&S Park (Math and Science Park)

Busan Citizens Park

73, Simingongwon-ro, Busanjin-gu

It is Busan's largest urban park with a size of 520,000m², equipped with woodland paths, walking trails, a labyrinth garden, a sandy beach within the park, a culture and arts village, a book cafe in the forest, children's play areas, and a large grass square. In particular, a tunnel fountain, musical fountain, and high fountain soaring into the sky are the must-see attractions available only at Busan Citizens Park.



TIP

Fresh diversions such as Sky-Colored Falls, a Tunnel Fountain, and Musical Fountain are only provided in this park. They run four times a day on weekdays and six times a day on holidays between April and October. Note that they do not run every Monday.

Information

- 1 Metro Line 1
- Metro Lines 1 and 2 at Seomyeon Station (Exit 7) ▶ Transfer to Bus 33 ▶ Get off at Busan Citizens Park
- Park Management Office : 051) 850-6000 citizenpark.or.kr

Beomeosa Temple

Beomeosa Temple, 250, Beomeosa-ro, Geumjeong-gu



A temple founded by Buddhist Master Uisang during King Munmu reign in Silla is one of the three major temples in the Yeongnam Region including Haeinsa Temple and Tongdosa Temple. With a trail through a grove of soaring bamboo stalks and blooming apricot flowers in spring, it is a serene spot to feel peace and quiet.

Information

- 1 Metro Line 1
- Metro Line 1 at Beomeosa Station (Exit 5) ▶ Transfer to Bus 90 ▶ Get off at Beomeosa Temple
- Administrative Office : 051) 508-3122 www.beomeo.kr

Oncheoncheon Civic Park

288, Oncheoncheon-ro, Dongnae-gu

The Oncheoncheon River was born in 2005 as a result of a nature-friendly river formation project. Since then, it has been a beloved spot for leisurely walks and romantic dates. The riverside walking trail and bicycle path invite locals and visitors to take a break and relax amid nature. The in-line skating tracks, basketball court, badminton court, and other sports facilities keep visitors engaged in exciting and fun sports



Information

- 1 Metro Line 1
- Metro Line 1 at Oncheonjang Station (Exit 1)
- Oncheoncheon Management Office : 051) 550-6642
- oncheon.dongnae.go.kr

2

LINE

Yangsan ... Hwamyong Sujeong Deokcheon ... Sasang ... Seomyeon Jeompo BIFC-Busan Bank Kyungsung Univ. Pukyong Nat'l Univ. Namcheon Geumnyeonsan Gwangang Suyeong Millak Centum City BEXCO Dongbaek Haeundae Jung-dong Jangsan

V I S I T V I S I T

BUSAN METRO LINE no.2

Let's take a ride on Metro line 2!
 You can take in a full range of Busan's attractions including the beautiful night views in Haeundae and Gwangang, the BIFC building, and the Busan Cinema Center to top off your journey through this city of film!

N B U S A N

- Haeundae
- Centum City
- Marine City
- Gwangang / Millak-dong
- Igidae Park
- Kyungsung Univ. · Pukyong Nat'l Univ
- Daeyeon-dong
- Busan International Finance Center

B U S A N B U S A N

Haeundae

해운대

Dalmaji-gil Road

Jung 2-dong, Haeundae-gu



The visualized effect of moonlight is said to influence people's emotions. Let's go to Moontan Road, the pride of Busan, where you can walk in the moonlight. It is usually called Dalmaji-gil. This hillside path extends from Haeundae to Songjeong along the seaside, edged with rows of cherry trees and pine trees. Because of its marvelous view, it is beloved as a pleasant drive and romantic place. You can see art galleries, cafes, luxurious restaurants, and more, here and there, each with their own unique atmosphere.

Information

- 2** Metro Line 2
- Metro Line 2 at Jangsan Station (Exit 6) ▶ Transfer to TownBus 2, 7, 10 ▶ Get off in front of The World's Mystery Library
- Haeundae Tourist Information Center : 051) 749-5700
- sunfun.haeundae.go.kr

BUSAN X the SKY

The Sharp Landmark Tower (Jung-dong), 30, Dalmaji-gil, Haeundae-gu, Busan)

BUSAN X the SKY is located on the 100th floor of Haeundae LCT The Sharp Landmark Tower (Jung-dong), 30, Dalmaji-gil, Haeundae-gu, Busan), the second-tallest building (411.6 m) in Korea. It is Korea's best and largest observatory, blessed with both a vast ocean view in front of Haeundae Beach and an extraordinary panorama of Busan.



Information

- 2** Metro Line 2
- Come out of Exit 7 of Jungdong Station on Busan Metro Line 2. ▶ Walk 844 m to LCT.
- 051) 731-0098, 0099 www.busanxthesky.com

Nurimaru APEC House

116, Dongbaek-ro, Haeundae-gu

Erected on Dongbaekseom Island in 2005 to accommodate the Asia-Pacific Economic Cooperation (APEC) Summit held in Korea that year, the Nurimaru APEC House drew high praises for its unique and modern interpretation of the traditional architectural style of Korean jeongja (wooden pavilions). The facility now displays photographs and records of the historic APEC Summit of 2005 and features a miniature of the building, as well as a souvenir shop selling APEC-themed goods. Climb to the top of Dongbaekseom Island to gain a panoramic view of Nurimaru APEC House and the district of Suyeong-gu beyond the Gwangandaegyo Bridge, shining so beautifully with special light shows at night.



Information

- 2** Metro Line 2
- Metro Line 2 at Dongbaek Station (Exit 1) ▶ 800m toward The Westin Chosun Busan ▶ Dongbaekseom entrance ▶ Nurimaru APEC House
- 051) 744-3140

Haeundae Beach

264, Haeundaehaebyeon-ro, Haeundae-gu

Going beyond Busan, Haeundae is beloved throughout the country as a vacation spot. It teems with so many attractive places such as 5-star hotels, restaurants, and an aquarium. In addition, it boasts outstanding popularity and receives more than million tourists annually, particularly in the summer season. Haeundae is a must-visit site when you visit Busan



Information

- Metro Line 2 at Dongbaek Station (Exit 1)
- ▶ 800m toward The Westin Chosun Busan
- ▶ Dongbaekseom entrance
- ▶ Nurimaru APEC House
- Haeundae Tourism Facility 051) 749-7611-7
- sunfun.haeundae.go.kr

TIP

Haeundae traditional market

Just five minutes away from the beach and filled with delicious dishes, this market is always busy with TV film crews, too. There are sushi restaurants serving a variety of fresh raw fish on the spot such as eel, sea squirt, domi (sea bream), and flounders. Also, Dwaejigukbap (pork and rice soup), a representative Busan food, can be enjoyed near here.

Dongbaekseom Island

Throughout Dongbaekseom Island, U-dong, Haeundae-gu

Located at the southern end of Haeundae Beach, Dongbaekseom Island creates a picture-sque scene in harmony with a thick forest of camellias and pine trees. Tourist attractions in Dongbaekseom Island include a walking path and the Nurimaru APEC House built for the 2005 APEC summit.



TIP

Dongbaekseom Lifestyle store

Lifestyle store located inside the dining pub on the second floor of The Bay 101. The kitchen concept store suggests a tastier way of living by introducing a wide variety of Korean and international food and beverage, cookware, and brands.

Information

- Metro Line 2 at Dongbaek Station (Exit 1) ▶ 820m toward
- ▶ The Westin Chosun Busan
- ▶ Dongbaekseom entrance

Shinsegae Department Store Lotte Department Store

35, 59, Centumnam-daero, Haeundae-gu



Shinsegae and Lotte Department Stores are connected to the underground passageway of Centum Metro Station. Shinsegae Department Store is registered in the Guinness Book as the largest department store in the world. The huge composite shopping and cultural space created by these two department stores boasts a bounty of attractions that seizes shoppers' attention all day long.

Information

- Metro Line 2 at CentumCity Station (Exit 6, 8, 10, 12) ▶
- Walk about 100m(2 minutes required)
- Shinsegae Centum City : 1588-1234
- Lotte Dept. Store : 051) 730-2500
- www.shinsegae.com store.lotteshopping.com

Haeundae Cine Road

U-dong, Haeundae-gu



Haeundae Cine Road extends from Dongbaekseom Island to the Yacht Center. It features trick art on the ground as well as a 10 Million-viewers Movies Zone, Animated zones, Haeundae Background Movie Zone, and more. You can also appreciate the sculptures and hand prints in Santorini Square.

TIP

You can enjoy the taste of macaroons by Pierre Ledent, known as the best Belgian chocolatier in Europe, in Marine City. How do macaroons prepared with recipes that have been passed down through four generations taste? Though a little pricey, the extra tug on your purse strings is worth it because you can experience the taste of authentic Belgian chocolate.



Information

- Metro Line 2 at Dongbaek Station(Exit 3)
- ▶ About 1.23km toward Marine City
- (18 minutes required)

Busan Cinema Center

120, Suyeonggangbyeon-daero, Haeundae-gu

The heart of Busan as a representative film city of Asia is the Busan Cinema Center in Centum City. It's comprised of different multi-purpose halls such as three exclusive theaters, an outdoor stage, 'BIFF Hill' and 'Cinemountain.' The opening and closing ceremonies of the Busan International Film Festival as well as red carpet events are held here.



TIP

This provides 22,000 sorts of diverse film-related materials. In particular, materials related to showings of the Busan International Film Festival can only be seen here. Anyone can use the archive from 9 a.m. to 6 p.m. ID cards are required.

Information

- Metro Line 2 at Centum City Station (Exit 12) ▶ 600m toward Suyeonggangbyeon-daero
- Busan Cinema Center : 051) 780-6000 dureraum.org

Gwangalli Beach·Gwangandaegyo Bridge

219, Gwanganhaebyeon-ro, Suyeong-gu

Gwangalli Beach is known for its breathtaking night view with Gwangandaegyo Bridge stretching across the ocean in the background. You can find differently themed streets around Gwangalli Beach featuring a variety of concerts and things to enjoy in all seasons, including the annually held Busan Fireworks Festival.



TIP

Equipped with the world's largest LED lighting and sound facilities for bridges, Gwangandaegyo Bridge has a multidimensional outdoor landscape lighting system. You will be able to enjoy the breathtaking view of the bridge with fantastic lighting from sunset to 12:00(midnight) on weekdays (from Sunday to Thursday) and from sunset to 2:00 a.m. on weekends (from Friday to Saturday) as well as an amazing laser show three times a day (8:30, 9:30, 10:30 p.m.) for about 10 minutes over the beautiful night sea of Gwangalli.



Information

2 Metro Line 2

- Metro Line 2 at Gwangan Station (Exit 3, 5) ▶ 700 meters toward Gwangalli Beach
- Suyeong District Office Tel : (051) 610-4000
- U-Tourist Information Center : (051) 610-4848
- gwanganbridge.bisco.or.kr

Millak Waterside Park

361, Gwanganhaebyeon-ro, Suyeong-gu

It is Korea's first waterfront park, a place of relaxation where you can enjoy the ocean view, located between Haeundae and Gwangalli. Millak Waterside Park with a size of 33,057m², accommodates up to 40,000 people, equipped with amenities, such as benches, shade huts, flower gardens, and a walkway with colored blocks. Sitting in the stands, with a size of 3,040m², you can even enjoy dipping your feet in the sea at high tide.



TIP

This waterside park bordered with plenty of restaurants is always bustling with nightlife. Sushi restaurants make up most of the eateries, but many venues such as a gelato ice cream store, a luxurious Chinese restaurant, and Yeontangui (meat roasted on briquettes) are also hidden in the area. Be sure to look carefully around the water-side park.

Information

2 Metro Line 2

- Metro Line 2 at Gwangan Station (Exit 5) ▶ Transfer to Bus 83-1 ▶ Get off at Millak Waterside Park
- Metro Line 2 at Millak Station (Exit 1) ▶ Transfer to Bus 210 ▶ Get off at Millak Waterside Park

Millak-dong Raw Fish Street

Across from Gwangalli Beach Theme Street, Gwanganhaebyeon-ro, Suyeong-gu

Millak-dong Raw Fish Street is proudly recognized as a food theme street by the Ministry of Culture, Sports and Tourism and the Korea Tourism Organization. It features a view of Gwangandaegyo Bridge, across tables filled with raw fish. Selected fish can be tasted as sashimi on the spot.



TIP

The more you know, the more you can enjoy the taste of seasonal raw fish.

- Spring : Domi (tripletail), gray mullet, black rockfish, anchovy, dark-banded rockfish, spotty belly greenling, etc.
- Summer : Stripedbeakperch, bass, croaker, hiramaskingfish, horse mackerel, sawwedgedperch, pikeconger, etc.
- Fall : Gizzardshad, squid, salmon, hairtail, Spanish mackerel, mackerel, long-legged octopus, etc.
- Winter : Black sea bream, bastard halibut, black rockfish, yellowtail, gray mullet, Kareius bicoloratus, monkfish, halfbeak, etc.

Information

2 Metro Line 2

- Metro Line 2 at Gwangan Station (Exit 3) ▶ Go straight toward Gwangalli Beach Intersection, turn left at the beach road, and then go straight

Igidae Park

68, Igidaegongwon-ro, Nam-gu (Yongho-dong)



This is where you can see Gwangan daegyo Bridge at a slightly different angle. It is a hidden view point whose real view is known to only a few people. The coastal walk gives you a chance to appreciate this area's natural beauty of the sea and jagged cliffs. Particularly, it commands a world-class night view of Marine City as well as Gwangan Bridge.

TIP

This is where actor Lee min-gi and actress Gang ye-won had a talk in the movie "Haeundae," and is also particularly special because of its impressive night view in harmony with Gwangan Bridge.

Information

2 Metro Line 2

- Metro Line 2 at Kyungsung Univ-Pukyong Nat'l Univ Station(Exit 3, 5) ▶
- Transfer to Bus 20, 22, 27, 39, or 131 ▶ Get off at the Igidae Entrance Bus Stop ▶ About 1.8 kilometers toward Igidae Park (16minutes on foot)
- Phone Park Management Office : 051) 607-6361

Oryukdo Skywalk

137, Oryukdo-ro, Nam-gu



Taking in a thrilling feast of waves 30m below, the transparent U-shaped floor of the Oryukdo Skywalk makes people feel as if they were fling in the sky. As a junction where the East and South seas meet, this site is emerging as a new attraction and has been steadily attracting tourists since its opening in 2013. Be sure not to forget to wear your overshoes when walking on this bridge, as they are required and provided at the entrance.

Information

2 Metro Line 2

- Metro Line 2 at Kyungsung Univ - Pukyong Nat'l Univ Station(Exit 3, 5)
- ▶ Transfer 24, 27, 131 bus ▶ Stopover at Oryukdo Skywalk bus station
- Phone HaeParang St. Tour Guide Office : 051) 607-6395
- Facility Management Office : 051) 607-4937

Kyungsung Univ·Pukyong Nat'l Univ. Cultural Alley

36-1, Yongso-ro 13beon-gil, Suyeong-gu



Cultural Alley (Kyungsung Univ/Pukyong Nat'l Univ) is packed with restaurants, shopping streets, small theaters, and entertainment venues. It is where diverse trends coexist. It has its own special charm. In particular, the composite space known as Culture Alley was created by remodeling private houses to reproduce an atmosphere drenched in the past and so enjoyed by the older generation. Various theaters and cafes are very impressive.

TIP

There are many good, affordable, and authentic restaurants usually found near universities. Why not travel to these areas to find restaurants which have become hot spots through word of mouth? It is said that pub style corner stores have sprang up, where you can enjoy simple meals and live music at the same time.



Information

2 Metro Line 2

- Metro Line 2 at Kyungsung Univ · Pukyong Nat'l Univ Station(Exit 1)
- ▶ Move straight 100m and turn right ▶ Go straight 50m toward

Busan Cultural Center·Busan Museum

1 / 63, UN Pyeonghwa-ro 76beon-gil, Nam-gu



Located on UN Pyeonghwaro Road, Namgu Busan Cultural Center and Busan City Museum are living proof of Busan's history and emotions. As a venue of various performances and exhibitions, the Busan Cultural Center has developed into a multicultural space satisfying both Busan citizens and tourists appetite for culture. Situated in the vicinity of the Busan Cultural Center, the Busan Museum also displays the history of Busan at a glance, with language service in English, Japanese, and Chinese.

TIP

Dwaeji-gukbap (pork and rice soup) in Daeyeon-dong is already well-known nationwide. Come out of Exit 3 at Daeyeon Station on Metro Line 2 and go straight toward UN Pyeonghwa-ro. You can't miss it. It is said that people are willing to line up to eat the dish, dwaeji-gukbap. Try it for dinner.



Information

- Metro Line 2 at Daeyeon Station (Exit 3, 5) ▶ Walk 10 minutes toward Busan Museum
- Busan Cultural Center : 051) 607-6000
- Busan Museum : 051) 610-7111
- www.bscc.or.kr / museum.busan.go.kr

UN Memorial Cemetery

93, UNpyeonghwa-ro, Nam-gu

Let's look around the first UN-related memorial hall in Busan. It is composed of diverse exhibition halls which reproduce scenes of the Korean War. You can look around themed places such as the permanent exhibition halls, special exhibitions, a 4-D theater, and observatory.



Information

- Metro Line 2 at Daeyeon Station (Exit 3) ▶ About 580m toward UN Gyocharo (10 minutes on foot) ▶ About 470m toward the UN Memorial Park (7 minutes on foot)
- UN Peace Memorial Hall : 051) 625-0625 www.unmck.or.kr

BIFC

40, Munhyeongeumyung-ro, Nam-gu

A tremendous 63-story building has been erected as a new landmark for Busan finance. The BIFC (Busan International Finance Center) is a smart comprehensive financial complex equipped with advanced facilities and high-speed systems. Individual business zones with services such as food and beauty care will be established in the BIFC Mall.



TIP

Munhyeon-dong is highly recommended if you are searching for nearby popular restaurants. Here is one made even more famous after the box office hit movie "Friend." Walking 650 meters toward Munhyeon Junction from Exit 1 or 2 at Munhyeon Station, you can find Munhyeon Gopchang Alley. Gopchang is a representative Busan dish which has been beloved steadily since the 70s and 80s. Why don't you fall in love with the taste of gopchang?



Information

- Metro Line 2 at Busan International Finance Center Station (Exit 3)
 - ▶ 131m from the exit (2 minutes on foot)

Yeonyojae, Fermentation Culture School

110 Jeonpo-daero, Nam-gu

If you want to learn about the local fermentation culture in Busan, Yeonyojae would be the perfect place. As a tour operator and an "Educational and Training Institute for Promoting Korean Traditional Liquor" designated by the Ministry of Agriculture and Forestry, Yeonyojae is a cultural space where you can participate in a variety of activities, including tasting traditional wines and liquors, brewing rice wine, and skin care sessions using liquors. It also has the world's smallest winery for producing house rice wine. It will never cease to excite your five senses by serving side dishes cooked with rice wine that go well with Busan Dongdongju.



TIP

"Seasoned sea string and blanched horned turban and octopus" is the must-try signature menu of "Anjung," Korea's first traditional liquor store and bistrun by the "Educational and Training Institute for Promoting Korean Traditional Liquor." You will feel as if you were a Busan resident after enjoying the signature menu with its specialty rice wine, a restored version of the home-style Dongdongju that no longer exists in Busan.

Information

- Metro Line 2 at Busan International Finance Center Station (Exit 4)
 - Yeonyojae, Fermentation Culture School : 051) 636-9355
 - www.yrjnschool.com

Suyeong
Mangmi
Baesan
Mulgangol
Yeonsan
Geoje
Sports Complex
Sajik
Minam
Mandeok

⋮

3

Dongnae
Suan
Nangmin
Chungnyeolsa
Myeongjang
Seo-dong
Banyeo Agricultural Market
Seokdae
Youngsan Univ.
Dongbusan Univ.

⋮

4

Sasang
Gwaebeop Renecite
Seobusan Yutongjigu
Gimhae International Airport
Deokdu
Deunggu
Daejeo
Pyeonggang
Daesa
Buram

⋮

Busan-Gimhae Light Rail

Ilgwang
Gijang
OSIRIA
Songjeong
Sinhaeundae
BEXCO
Centum
Jaesong
Won-dong
Allak

⋮

Donghae Line

V I S I T V I S I T

Metro Line
3·4

Busan-Gimhae
Light Rail
Transit

Donghae Line

Take a journey through Busan on Metro Line 3 and 4, and the Busan-Gimhae Light Rail Transit, and Donghae Line, and sit back to escape your busy schedule. A special time unfolds along this route where a coastal walk, the smell of drying fish, children's laughter, and animals exist together in harmony.

B U S A N B U S A N

Sajik Baseball Stadium

45, Sajik-ro, Dongnae-gu

Sajik Stadium is home to the city's original baseball team, the Lotte Giants. Baseball fan culture in Busan has been well documented, and was even recognized for its uniqueness when covered in The New York Times in 2014. The vigorous roar of an audience with diverse cheering paraphernalia such as orange-colored bags fills the Sajik-dong District whenever baseball games are played.



TIP

The Giants Museum

The entire history of the Lotte Giants can be seen in one glance. Located on the second floor of Sajik Baseball Stadium, the Giants Museum is composed of the History Hall, Baseball Products Hall, and Experience Hall as well as the Themed Zone in the name of Giants' heroes. It operates from 1 p.m. to 7p.m. during the baseball season and from 11 a.m. to 5 p.m. during the weekend. It is closed every Monday and in the off season.



Information

- 3 Metro Line 3
- Metro Line 3 at Sajik Station (Exit 1) ▶ Go straight 200m ▶ (Turn right and walk 500 meters for 14 minutes)
- Lotte Giants : (051) 590-9000
- giantsclub.com

Daejeo Ecological Park

2314-11, Daejeo1-dong, Gangseo-gu

There is no other place like the Daejeo Ecological Park to enjoy light sports such as football, baseball, and inline skating. It is especially satisfying in spring when marvelous scenes are created by beds of bright yellow rape flowers.



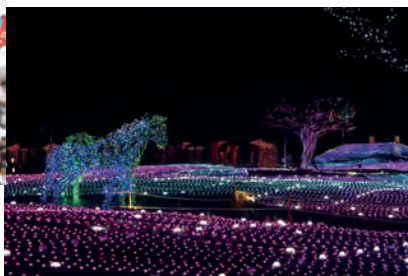
Information



- Board Busan Gimhae Light Rail at Toward Deokdu Station ▶
- Transfer Metro Line 3 at Daejeo Station ▶ Get off Gangseo-gu Office Station(Exit 5) ▶ A 13min walk
- Daejeo Ecological Park Management Office : (051) 971-6011

Let's Run Park Busan Gyeongnam

929, Garak-daero, Gangseo-gu



Let's Run Park Busan Gyeongnam is a composite leisure space where everyone can learn and experience everything about horses and enjoy various other pleasures. Visitors who have a particular desire for horse riding can enjoy lessons that they will never forget.

Information



- Transfer to Busan-Gimhae Light Rail Transit at Sasang Station from Metro Line 2 ▶ Get off at Gwaebepo Renecite Station ▶ Get on the Express Bus 1005 ▶ Get off at the Let's Run Park Busan Gyeongnam Front Gate Bus Stop ▶ Walk about 385m (roughly 6 minutes)
- 1566-3333
- park.kra.co.kr/busan

Songjeong Beach

62 Songjeong-dong, Haeundae-gu

Walk along Dalmaji-gil Road, and you will run into Haewoljeong, a small and charming wooden pavilion. Walk past the pavilion, and you will discover the Cherry Blossom Zone. Beyond this area is the wide open sea facing Songjeong Beach, a beach renowned for its untainted and natural beauty. A beloved vacation and surfing spot during the summer time, Songjeong Beach also hosts a number of exciting public events throughout the year; such as the Seaweed Festival, the Songjeong Beach Festival, and the Songjeong Jukdo Festival. It is also emerging as a popular spot for university camping trips and soon-to-be-wed couples looking for romantic backdrops for photographs. This is a highly recommended destination for people who wish to enjoy the sea and the beach in peace and quiet, away from the hassles of urban life.



Information

-  Donghae Line at Songjeong Station (Exit 1) ▶ Take the bus 139
- ▶ Get off at Songjeong Beach Entrance
-  Haeundae Facilities Management Office : 051) 749-5800
-  sunnfun.haeundae.go.kr

Gijang Deungdae-gil-Jukseong Catholic Church

134-7, Jukseong-ri, Gijang-eup, Gijang-gun

The Catholic Church erected as a setting for the drama "Dream" is still popular even after the series has ended and has been turned into an attraction. Nearby, you can watch unusual lighthouses with different names such as Baseball Lighthouse, Seagull Lighthouse, Worldcup Lighthouse, and Baby Bottle Lighthouse. Pose in front of them for a picture and capture an unforgettable memory.

TIP

Gijang Anchovy Festival

Do not miss the Gijang Anchovy Festival held throughout Daeyeon Port, Gijang-gun every year. This representative spring food of Daeyeon Port is also famous nationwide.



Information

-  Donghae Line at Gijang Station(Exit 1) ▶ Walk 230m ▶ Transfer to the Gijang-gun 6 bus ▶ Get off at Duho ▶ Walk about 400m (A 6-minute walk)
-  Gijang-gun Office : 051) 709-4000  www.gijang.go.kr

Haedong Yonggungsa Temple

86 Yonggung-gil, Gijang-eup, Gijang-gun

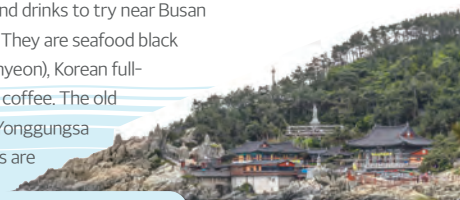
The Portrait of Putai marking the start of the 108-step stairway leading into the main temple site is stained with handprints because of the rumor that touching the belly of the beloved Buddhist deity in this portrait can make women bear and give birth to sons.

TIP

There are three famous food and drinks to try near Busan Haedong Yonggungsa Temple. They are seafood black bean noodles (haemul jjajang myeon), Korean full-course meal (hanjeongsik), and coffee. The old cafes and restaurants around Yonggungsa Temple and their famous dishes are worth experiencing.

Information

-  Donghae Line at Songjeong Station (Exit 1) ▶ Take the bus 139 ▶ Get off at Yonggungsa National Institute of Fisheries Science
-  Haeundae Facilities Management Office : 051) 749-5800  sunnfun.haeundae.go.kr



**Five Star Hotels** 5성호텔

Hilton Busan	509-1111	Hotel Nongshim	550-2100
Lotte Hotel Busan	810-1000	The Westin Chosun Hotel Busan	749-7000
Paradise Hotel Busan	742-2121	Park Hyatt Busan	990-1234

Four Star Hotels 4성호텔

Asti Hotel Busan	409-8888	Shilla Stay Haeundae Hotel	912-9000
Commodore Hotel	466-9101		

Three Star Hotels 3성호텔

TT Hotel	808-5514	Hotel Foret Premier Haeundae	743-2853
Fairfield by Marriott Busan	749-7773	Paragon Hotel	328-2001
Benikia Premier Marianne Hotel	606-0600	Homers Hotel	750-8000
Benikia Hotel Haeundae	760-7000	Stanford In Busan	795-7700
Busan Business Hotel	808-2000	Busan Tourist Hotel	241-4301
Ibis Ambassador Busan	930-1100	Ilua Hotel	744-1331
Aqua Palace Busan	756-0202	Tower Hill Hotel	250-6100

Two Star Hotels 2성호텔

Best Louis Hamilton Hotel	760-0808	Air Sky Hotel	971-0093
Brown dot Hotel	201-3994	Gwang Jang Hotel	464-3141
Dong Busan Tourist Hotel	727-9991	Industrie Hotel	710-9309
Society Hotel	744-0303	Londoner Hotel Gwangsan	755-0055
Busan Shinshin Hotel	816-4479	Toyoko Inn Busan Station 1	466-1045
Castle Beach Hotel	757-2500	The King Hotel	752-1999
Ocean to Heaven	761-3001	Lamer Hotel	634-3001
Toyoko Inn Seomyeon	638-1045	Bay Hound Hotel	413-1114
Hotel1	759-1011	Toyoko Inn Busan Station 2	442-1045
Hotel Foret Busan Station	463-6171	The Point Hotel Gwangsan	929-8600
No.25 Signature Hotel Daechung	464-8532	Dawn Beach Hotel	752-3210
Browndot Hotel Songjeong	702-0090	Best in city Hotel	464-8883
Hotel Olla	704-0001	Hotel Noah Busan	710-6777
Prime Tourist Hotel	465-4011	Libero Hotel	740-2111
Diamond Hotel	867-1100	JB Design Hotel	750-9000
TRT Hotel	819-8231	Tourist Hotel GG	626-7723
Ibis Budget Ambassador Busan Haeundae	901-1100	Busan Beach Hotel	231-0750
South Vandeco Hotel	815-5252	SeattleB Hotel	852-7685
Suntree Hotel	742-0021	Toyoko Inn Busan Haeundae 2	741-1045
Hotel Raon	714-0003	H-Avenue Gwangsan Beach	751-5858

One Star Hotels 1성호텔

Premier V	752-6564	H Avenue Gwangalli	753-1340
2 Heaven Hotel	757-7661	Star Hotel	761-1800
U & Songdo Hotel	242-6635	Brown Dot Hotel Gwangalli	753-3288
Songdo Beach Hotel	254-2000	Lion Hotel	808-3593
3-6-9 Tourist Hotel	701-7601	Las Vegas Tourist Hotel	206-0472
Gwangalli Utopia Tourist Hotel	757-2301	Browndot Hotel Jeonggwan	728-8100
Hotel G&G	513-9123	Idea Tourist Hotel	611-6643

TIP & TALK

1

Things to do

Places to shop in Busan

2

Busan and the Sea

Enjoy a cruise
around Busan

3

BUSAN FESTIVAL
 Delightful Busan
 Festivals Year Round

● Here is a tip for making your trip to Busan more special ●

You have arrived here in Busan
with a backpack and we will share with you,
the side of Busan that is even more fun and charming.

Blue sea, fresh seafood, camellia, and seagulls
-things that symbolize Busan and green nature

in various parts of the city
all make Busan a city loved by people
from all over the world.

Busan's distinct four seasons attract visitors
with different attractions and the city is remembered by
all as a place to come again.

With pleasant memories of eating, experiencing, and indulging.

Now let's hope the tips we offer can help you get
a richer taste of Busan.

1

Things to do! Places to shop in Busan

Busan Premium Outlet –
 Lotte Premium Outlet Dongbusan Branch –
 Shinsegae Centum City/Lotte Dept. Store –
 / Hyundai Dept. Busan Branch
 Lotte Duty Free Shop, Shinsegae Duty Free Shop –
 Gimhae Airport Duty Free Shop
 Seomyeon Underground Shopping Center –
 IKEA DongBusan –
 Bupyeong-dong Night Market –

1

TIP

|

Things to do!

Places to shop in Busan

Outlet·Department



Busan Premium Outlet

Busan Premium Outlet is composed of 180 strictly chosen overseas brands such as Armani and Marc Jacobs, as well as popular domestic brands such as Obzee and KUHO. It sells carry over products but has the atmosphere of a premium shopping mall. It is open until 8p.m. during weekdays and until 9p.m. on weekends and holidays.

📍 1133, Jeonggan-ro, Jangan-eup, Gijang-gun
 ☎ 1644-4001

Lotte Premium Outlet Dongbusan Branch

Other than the outlet, Lotte Mart, Lotte Cinema, and Hi Mart can also be found, creating a satisfying shopping and cultural space. Since its opening in 2014, Lotte Premium Outlet has striven to be a comprehensive shopping mall full of Santorini's romanticism. In addition to the shopping mall, the interior boasts Fountain Square, Lighthouse Observatory, and Rose Garden which conjures exotic feelings of Greece.

📍 64, Dangsa-ri, Jangan-eup, Gijang-gun
 ☎ 051) 901-2500



Shinsegae Centum City/Lotte Dept. Store/Hyundai Dept. Busan Branch

Shinsegae Department Store This was listed as the World's Largest Department Store in the Guinness Book of World Records in 2009, and the record still stands. In addition to the shopping center, it is equipped with various leisure facilities such as Spa Land, an ice rink, Sky Park, and CGV Cinema. ☎ 1588-1234

Lotte Department Store This department store has four branches in Busan. Including the Centum City Branch, the first shopping commercial sphere within Centum City, Lotte Department Store operates also operates a Busan Main Branch, Dongnae Branch, and Gwangbok Branch. Every branch also boasts a Lotte Cinema for visitors to enjoy. ☎ 051) 730-2500

Hyundai Department Store The only Hyundai Department Store in Busan is located in Beomil-ro, Dong-gu. This 9-story store has a variety of amenities for customers, including a nursing room and cafes. There are neighboring commercial spaces, such as Jayu Market and Jewelry Market. ☎ 051) 667-2233

Duty Free Shop-Shopping Mall-Night Market

Lotte Duty Free Shop / Shinsegae Duty Free Shop / Gimhae Airport Duty Free Shop

A duty-free shop district is a small shopping paradise for travelers. Lotte Duty Free Shop, Shinsegae Duty Free Shop, and Gimhae Airport Duty Shops run by Lotte and Shinsegae are available in Busan. Goods purchased in each duty-free shop can be received only after proceeding through the customs gate at the airport or port.

Lotte Duty Free Shop 8F, 772 Gaya-daero, Busanjin-gu ☎ 051) 810-3880

Shinsegae Duty Free Shop B1/1F, 15,Centum4-ro, Haeundae-gu ☎ 1588-1234

Gimhae Airport Duty Free Shop 108, Airport Access Road, Gangseo-gu ☎ 051) 970-2701

Lotte Duty Free Shop Gimhae International Airport ☎ 051) 979-1900

Dufry Thomas Julie Korea Gimhae International Airport Branch ☎ 1899-3819

Busan Duty Free Yongdusan Branch ☎ 051) 460-1900

Busan Duty Free Busanhang Branch ☎ 051) 460-0900

Seomyeon Underground Shopping Center

Seomyeon Underground Shopping Center busanjeom is a leading underground shopping mall in Busan, with about 570 dozen stores.

📍 Shopping Center, 786, Jungang-daero, Busanjin-gu



IKEA DongBusan

With its headquarters in Sweden, IKEA is the world's largest retailer specializing in furniture, miscellaneous goods, and daily necessities. IKEA DongBusan, consisting of four levels aboveground and one basement level, is open from 10:00 to 22:00 on weekdays, weekends, and public holidays. Plan your trip to Lotte Premium Outlets - Dongbusan Branch right beside IKEA DongBusan.

📍 17, Dongbusangwangwang 3-ro, Gijang-eup, Gijang-gun, Busan

☎ 1670-4532

Bupyeong Kkangtong Night Market

Bupyeong-dong Night Market is the first traditional market nationwide to shift to a night market designed for culture and tourism. It is open from 6 p.m. to midnight, welcoming visitors all year round. You can enjoy tasting not only domestic dishes, but also traditional cuisine of neighboring countries.

📍 48, Bupyeong 1-gil, Jung-gu

☎ 051) 243-1128



TIP

2

Busan and the Sea Enjoy a cruise around Busan

The Bay 101 –

Tiffany 21 –

Panstar Cruise –

Taejongdae Gwangwang Cruise Ship –

Jagalchi Cruise –

Nakdonggang River Eco Tour Cruise –

YACHT TALE –

Haeundae Excursion Boats –

Busan and the Sea

Enjoy a cruise around Busan

There are many ways to enjoy Busan.

However, the best way to enjoy the marine city of Busan is to go on a cruise out of Haeundae, Busan Port or Taejongdae.

Choose any venue, and start your cruise.

The Bay 101

52, Dongbaek-ro, Haeundae-gu

The Bay 101 Yacht Club is a high-quality public marina facility filled with Korea's best marine leisure boats, including high-speed jet boats, speedboats, jet skis, and Korea's largest 76-foot catamaran yacht.

T. 051) 726-8855 H. <http://www.thebay101yacht.com>

- Metro Line 2 Dongbaek Station (Exit 1) ▶ Towards Dongbaek Sageori
▶ Walk about 285m to get to The Bay 101 (A 5-minute walk)

Course Info

- **Public tour** (Sailing Time: Approx. 60 min per session)
Weekly)12:00, 14:00, 16:00, 18:00
Night time)19:00, 20:00, 21:00, 22:00(weekend)
- **Private Tour** Day time)10:00~22:00 (Sailing Time: Approx. 60 min per session)
Possible to sail at your desired time between 10:00 and 22:00

※ Weekends: Fridays, Saturdays, Sundays, public holidays, and other holidays



The Bay 101 52, Dongbaek-ro, Haeundae-gu **Tiffany 21** 168, Marine city 1-ro, U-dong Haeundae-gu

Tiffany 21

1439, U-dong, Haeundae-gu

Tiffany 21 is a cruise ship for marine tours intended for the enjoyment of the picturesque ocean adjacent to Busan. Other than a marine tour, a special memory can be made by using its event space for parties and ceremonies such as an on-board meeting, a workshop, a wedding, or one's 60th birthday party.

T. 051) 743-2500 H. haeundaecruise.com

- Metro Line 2 at Dongbaek Station (Exit 1) ▶ Go straight 400 meters
▶ Turn right at Dongbaek Sageori ▶ Go straight 200 meters

Daytime course (70 minutes)

- Route(13:30 / 15:30)

Tiffany 21 dock > Dongbaekseom Island(Nurimaru APEC House) > Oryukdo Island > Igidae > Gwangalli > Tiffany 21 dock

Nighttime course (60 minutes)

- Route(19:30/21:00)

Tiffany 21 dock > Dongbaekseom Island (Nurimaru APEC House) > Haeundae > Gwangalli > Gwangandaegyo Bridge > Tiffany 21 dock

Panstar Cruise

15-3, Jungang-dong 4-ga, Jung-gu

Panstar Cruise provides a special time with performances and events together. It consists of a cruise zone and a ferry zone, both of which provide a variety of services to meet customers demands for a high quality and substantial trip. Passengers using the ferry zone can also apply for additional upgraded cruise zone services on board after payment.

T. 1577-9996 H. www.panstarcruise.com

- Metro Line 1 at Jungangdong Station (Exit 14) - Free shuttle bus recommended

Course Info

• Night-to-Remember Cruise (2 Days 1 Night)

: provides a fantastic view of the seashore of Busan.

- Taejongdae > Haeundae > Gwangalli (Gwangandaegyo Bridge) > Oryukdo > International Passenger Terminal (Jungang-dong)
- Fares : KRW 130,000 to 350,000 (varies by guestroom).

• Hyeonhaetan One-Night Cruise (2 Days 1 Night)

You can cruise cross the Sea of Hyeonhanetan to enjoy the view of Daemado Island(Hitakatsu) at close range. Please note that the cruise departs every third Saturday of the month

- **Charter Cruise** : Charter a cruise for an unforgettable private party at sea.

※ For inquiries, call Panstar Cruise



Panstar Cruise 15-3, Jungang-dong 4-ga, Jung-gu

Taejongdae Gwangwang Cruise Ship Within Taejongdae Recreation Area, Donggam-dong

Taejongdae Gwangwang Cruise Ship

Within Taejongdae Recreation Area, Dongsam-dong

This ship is designed to take a trip around Taejongdae from the nearby dock. This is a round-trip to Jodo Island (Arch island) where Korea Maritime University is situated, taking approximately 40 minutes. Passengers can view nearby migratory birds, magnificent natural scenery, and the open sea on board.

T. 051) 405-3989 H. taejongdae.bisco.or.kr

- Metro Line 1 at Nampo Station (Exit 6) ▶ Transfer to Bus 8,30,66, or 88 ▶ Get off at the Taejongdae Bus Stop ▶ Toward Taejongdae Recreation Area

Course Info

1. Gamji Beach Dock (Tel. 051)405-3989 Dock > Jodo Island > Taejongdae Sea > Dock
2. Gonpo Garden Dock (Tel. 051)405-2900 Dock > Jodo Island > Taejongdae Sea > Dock
3. Taewon Jagal Madang Dock (Tel. 051)403-9098 Dock > Jodo Island > Taejongdae Sea > Dock
4. Deungdae Jagal Madang Dock (Tel. 051)405-3434 Dock > Jodo Island > Taejongdae Sea > Dock

Jagalchi Cruise

60, Jagalchihaean-ro, Jung-gu

Create romantic memories with Jagalchi Cruise! Enjoy the blue seas of Busan during the daytime, and shift to the red hue of the sunset in the evening. Enjoy Busan with Jagalchi Cruise! T. 051) 241-0909 H. jagalchi-cruise.com

Course Info

Jagalchi Market > Amnam Park > Taejongdae Park > Jagalchi Market, maximum of 5 trips per day (4 trips guaranteed, final trip depending on demand), 90 minutes per trip

Nakdong River Eco Tour Cruise

Eulsukdo Quay : Inside Eulsukdo Eco Park, Nakdongnam-ro 1233beon-gil, Saha-gu (Open from April to October)

Hwamyong Quay : Inside Hwamyong Eco Park, Gangbyeon-daero, Deokcheon-dong, Buk-gu (Open from November to March)

This is a course departing from Eulsukdo and passing through Hwamyong and going back to Mulgeum in Yangsan. It is called the "Nakdong River Eco ferry." You may enjoy the time assimilating with nature and admiring the beautiful natural scenery.

T. 051) 294-2135 H. bto.or.kr/eco

Course Info

- [from April to October] WED/THU **Departure Times** 9:30, 10:30, 13:30, 16:00, 17:00
Cruise Route [Eulsukdo - Irungdo Island (30 minutes) / Eulsukdo - Daedong (2 hours)]
- [from April to October] FRI/SAT **Departure Times** 9:30, 10:30, 13:00, 14:10, 15:00
Cruise Route [Eulsukdo - Irungdo Island (30 minutes) / Eulsukdo - Daedong (2 hours) / Eulsukdo - Mulgeum (4 hours)]
- [from April to October] SUN **Departure Times** 9:30, 10:30, 14:30, 17:00
Cruise Route [Eulsukdo - Irungdo Island (30 minutes) / Eulsukdo - Daedong (2 hours)]
- [November to March] TUE to SUN **Departure Times** 9:20, 10:20, 11:20, 14:00, 16:00
Cruise Route [Hwamyong - Mulgeum (1 hour and 20 to 40 minutes)]

※ No services are available on Mondays.

※ For any inquiries regarding our services, please feel free to contact us by phone beforehand.

YACHT TALE

Main Building #102, Suyeong Bay Yachting Center, 84 Haeundaehaebyeon-ro, Haeundae-gu

It offers a yacht stay program, which is a yacht rental service, for the first time in Korea. You can charter a luxury yacht on the sea to make special memories with your family, friends, and colleagues. Please feel free to choose one among a wide range of options, including family and deluxe yachts. T. 1599-1789 H. www.yachttale.com

- Dongbaek Station, Subway Line 2 (Exit 3) ▶ Go straight for 450m ▶ Turn left at Seungdang Samgeori ▶ Go straight for 300m

Course Info

- [Public Yacht Tour] Suyeong Bay Yachting Center ▶ Marine City ▶ Dongbaekseom Island (Nurimaru) ▶ Haeundae Beach ▶ (Cross) Gwangandaegyo Bridge ▶ Gwangalli Beach ▶ The Bay 101 ▶ Suyeong Bay Yachting Center
[Operating Hours] Daytime Sightseeing Tour 12:00, 14:00, 16:00 / Night Sightseeing Tour 18:00, 19:00, 20:00(weekend)
- [Private Yacht Tour] Suyeong Bay Yachting Center ▶ Marine City ▶ Dongbaekseom Island (Nurimaru) ▶ Haeundae Beach ▶ (Cross) Gwangandaegyo Bridge ▶ Gwangalli Beach ▶ The Bay 101 ▶ Suyeong Bay Yachting Center
[Operating Hours] Daytime Sightseeing Tour 10:00a.m. ~ 4:00p.m. departure time / Night Sightseeing Tour 5:00p.m. ~ 9:00p.m. departure time

Haeundae Excursion Boats

33-1 Dalmaji-gil 62beon-gil, Haeundae-gu

Haeundae Cruise, based in Busan, offers extraordinary cruise programs : Oryukdo Islets Marine Tour to drink with a panoramic coastal view of beautiful Busan by day and the Night Sightseeing Tour to enjoy the breath taking view of Gwangandaegyo Bridge by night. T. 051) 742-2525 ※ Please bring your ID card.

- Metro Line 2 at Jungdong Station (Exit 7) ▶ Go straight for 600 meters ▶ Turn right at Mipo Junction toward Haeundae Cruise ▶ Go straight for 200m

Course Info

- Daytime Oryukdo Islets Return Trip (About 70 minutes)
Haeundae (Mipo) <-> Dongbaekseom Island (Nurimaru) <-> Gwangandaegyo Bridge <-> Igidae Cliff <-> Oryukdo Islets
Departure Times 10:00 a.m. to sunset
- Gwangandaegyo Bridge Night Sightseeing Tour (About 50 minutes)
Haeundae (Mipo) <-> Dongbaekseom Island (Nurimaru) <-> Gwangandaegyo Bridge <-> Gwangalli Beach
Departure Times sunset to 9:00 p.m.
※ For inquiries, call Panstar Cruise



※ The schedules and fares provided are as of November 2019, and may be subject to change.

A Safe Trip to Busan



Keep Busan safe with Visit Busan!

For your safety

‘Wear a mask at all times!’



Be safe on your Busan trip by always wearing a face mask!

‘Use hand sanitizer!’



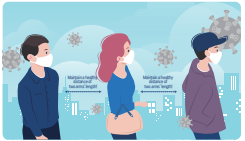
Stay safe in Busan by using hand sanitizer after coming into contact with doors, public facilities, or equipment!

‘Wash your hands for 30 seconds!’



Have a safe journey in Busan by washing your hands for 30 seconds or longer using soap and running water before and after doing activities!

‘Use hand sanitizer!’



Keep germs away on your Busan trip by maintaining a healthy distance of two arms' length from others!

When you are not feeling great

‘Stop traveling if you get sick!’



Stop traveling and stay at home once you develop a fever or respiratory symptoms (such as coughing and sore throat)!

‘Call 1339 when symptoms worsen!’



Call 1339 or local number + 120 to contact a local health center if your symptoms worsen!

Keep Busan safe though social distancing!

1~2m



For 30 seconds,



It's okay to



Twice a day,



When you are sick,



Stay apart! Wash your hands! Wear a mask! Open your window! Take a rest!

Come and Visit Busan

An exciting virtual trip to Busan!
www.visitbusan.net/en

Get to know the real stories behind Busan on Visit Busan, the official travel guide to Busan Metropolitan City!

